

MUFFLER CLAMPS

EASYSEAL CLAMPS



STAINLESS STEEL

Part No.	Description
E200	2"
E214	2-1/4"
E212	2-1/2"
E234	2-3/4"
E300	3"
E314	3-1/4"
E312	3-1/2"
E334	3-3/4"
E400	4"
E450	4-1/2"
E500	5"
E600	6"

PREFORMED CLAMPS



STAINLESS STEEL

Part No.	Description
PS212	2-1/2"
PS234	2-3/4"
PS300	3"
PS350	3-1/2"
PS400	4"
PS500	5"



ALUMINIZED

Part No.	Description
PA200	2"
PA214	2-1/4"
PA212	2-1/2"
PA234	2-3/4"
PA300	3"
PA350	3-1/2"
PA400	4"
PA500	5"

MUFFLER CLAMPS

ACCUSEAL CLAMPS



STAINLESS STEEL

Part No.	Description
W200S	2"
W214S	2-1/4"
W212S	2-1/2"
W234S	2-3/4"
W300S	3"
W350S	3-1/2"
W400S	4"
W450S	4-1/2"
W500S	5"
W600S	6"

ALUMINIZED

Part No.	Description
W200A	2"
W214A	2-1/4"
W212A	2-1/2"
W234A	2-3/4"
W300A	3"
W350A	3-1/2"
W400A	4"
W450A	4-1/2"
W500A	5"
W600A	6"

V BAND CLAMP



304 STAINLESS STEEL

Part No.	Description
V112	1-1/2"
V134	1-3/4"
V200	2"
V214	2-1/4"
V212	2-1/2"
V234	2-3/4"
V300	3"
V314	3-1/4"
V312	3-1/2"
V400	4"
V412	4-1/2"
V500	5"
V600	6"

MUFFLER CLAMPS



STANDARD DUTY 5/16" U-BOLT

Part No.	Description
516118	1-1/8"
516114	1-1/4"
516138	1-3/8"
516112	1-1/2"
516158	1-5/8"
516134	1-3/4"
516178	1-7/8"
516200	2"
516218	2-1/8"
516214	2-1/4"
516212	2-1/2"

HEAVY DUTY 3/8" U-BOLT

Part No.	Description
380112	1-1/2"
380158	1-5/8"
380134	1-3/4"
380178	1-7/8"
380200	2"
380218	2-1/8"
380214	2-1/4"
380212	2-1/2"
380234	2-3/4"
380300	3"
380312	3-1/2"
380400	4"
380412	4-1/2"
380500	5"

HEAVY DUTY STAINLESS STEEL 3/8" U-BOLT

Part No.	Description
380112SS	1-1/2"
380158SS	1-5/8"
380134SS	1-3/4"
380178SS	1-7/8"
380200SS	2"
380218SS	2-1/8"
380214SS	2-1/4"
380212SS	2-1/2"
380300SS	3"

Part No.	Diameter	Length
950435	43.5mm	95mm
950460	46mm	95mm
950510	51mm	95mm
950560	56mm	95mm
950610	61mm	95mm
950635	63.5mm	95mm

Part No.	Diameter	Length
125435	43.5mm	125mm
125460	46mm	125mm
125510	51mm	125mm
125560	56mm	125mm
125610	61mm	125mm



FLEXIBLE TUBING



BLANK ENDS FLEX WITH INNER BRAID

Part No.	Pipe Size	Flex Length	Overall Length
FL13404BI	1-3/4"	4"	4"
FL13406BI	1-3/4"	6"	6"
FL13408BI	1-3/4"	8"	8"
FL13410BI	1-3/4"	10"	10"
FL20004BI	2"	4"	4"
FL20006BI	2"	6"	6"
FL20008BI	2"	8"	8"
FL20010BI	2"	10"	10"
FL22504BI	2-1/4"	4"	4"
FL22506BI	2-1/4"	6"	6"
FL22508BI	2-1/4"	8"	8"
FL22510BI	2-1/4"	10"	10"
FL25004BI	2-1/2"	4"	4"
FL25006BI	2-1/2"	6"	6"
FL25008BI	2-1/2"	8"	8"
FL25010BI	2-1/2"	10"	10"
FL30004BI	3"	4"	4"
FL30006BI	3"	6"	6"
FL30008BI	3"	8"	8"
FL30010BI	3"	10"	10"

FLEXIBLE TUBING



FLEX WITH NIPPLE EXTENSIONS AND INNER BRAID

Part No.	Pipe Size	Flex Length	Overall Length
FL13404NI	1-3/4"	4"	8"
FL13406NI	1-3/4"	6"	10"
FL13408NI	1-3/4"	8"	12"
FL13410NI	1-3/4"	10"	14"
FL20004NI	2"	4"	8"
FL20006NI	2"	6"	10"
FL20008NI	2"	8"	12"
FL20010NI	2"	10"	14"
FL22504NI	2-1/4"	4"	8"
FL22506NI	2-1/4"	6"	10"
FL22508NI	2-1/4"	8"	12"
FL22510NI	2-1/4"	10"	14"
FL25004NI	2-1/2"	4"	8"
FL25006NI	2-1/2"	6"	10"
FL25008NI	2-1/2"	8"	12"
FL25010NI	2-1/2"	10"	14"
FL30004NI	3"	4"	8"
FL30006NI	3"	6"	10"
FL30008NI	3"	8"	12"
FL30010NI	3"	10"	14"

REPAIR ACCESSORIES

FLEXIBLE JOINT REPAIR



Part No.	Description
SJ134S	1-3/4"
SJ200S	2"
SJ214S	2-1/4"
SJ212S	2-1/2"

FLEX TUBING WITH FLANGE



METAL STRAP WITH 2 NUTS & 2 BOLTS



UNIVERSAL HANGERS

SWIVEL HANGERS



16001



16002



16003



16004
Tailpipe Hanger



16005
Swivel Rubber Loop



16006

J HOOK & ARROWHEAD WIRE



J hook
3/8" Wire
5/16" Wire



Arrowhead Wire

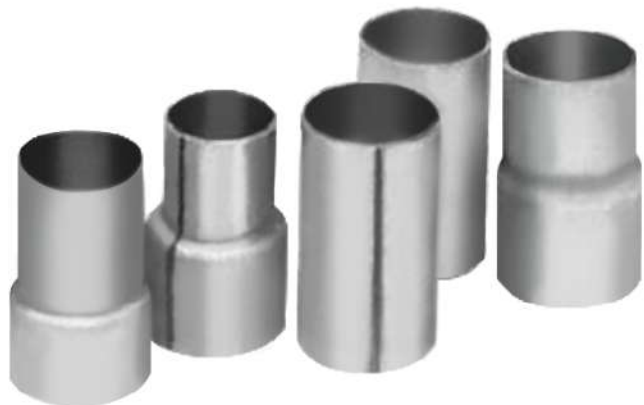
ADAPTERS & CONNECTORS

ID-OD Reducer		ID-ID Reducer		OD-ID Reducer	
Part No.	Description	Part No.	Description	Part No.	Description
128553	1-1/2"ID X 1-1/4"OD	137574	1-5/8"ID X 1-1/2"ID	128530	1-1/2"OD X 1-3/8"ID
128520	1-1/2"ID X 1-3/8"OD	128548	1-3/4"ID X 1-1/2"ID	128555	1-5/8"OD X 1-1/2"ID
128532	1-1/2"ID X 1-3/4"OD	128550	1-3/4"ID X 1-5/8"ID	128536	1-3/4"OD X 1-5/8"ID
128557	1-1/2"ID X 2"OD	137575	1-7/8"ID X 1-3/4"ID	128537	1-7/8"OD X 1-3/4"ID
128580	1-3/8"ID X 1-1/4"OD	128506	2"ID X 1-1/2"ID	128507	2"OD X 1-3/4"ID
128554	1-5/8"ID X 1-1/2"OD	128503	2"ID X 1-3/4"ID	128527	2"OD X 1-7/8"ID
128533	1-3/4"ID X 1-1/2"OD	128544	2"ID X 1-7/8"ID	137577	2-1/8"OD X 2"ID
128552	1-3/4"ID X 1-5/8"OD	128542	2-1/8"ID X 1-7/8"ID	128556	2-1/4"OD X 1-3/4"ID
128534	1-7/8"ID X 1-1/2"OD	128547	2-1/4"ID X 2-1/8"ID	128523	2-1/4"OD X 2"ID
128526	1-7/8"ID X 1-3/4"OD	128543	2-1/4"ID X 1-3/4"ID	128558	2-1/2"OD X 2-1/8"ID
128516	2"ID X 1-3/4"OD	128545	2-1/4"ID X 2"ID	137566	2-1/2"OD X 2"ID
128508	2"ID X 1-4/5"OD	128549	2-1/4"ID X 2-3/8"ID	128551	2-1/2"OD X 2-1/4"ID
128528	2"ID X 1-7/8"OD	128546	2-1/2"ID X 2"ID	137572	3"OD X 2"ID
128535	2-1/8"ID X 1-3/4"OD	128522	2-1/2"ID X 2-1/4"ID	137573	3"OD X 2-1/4"ID
128514	2-1/8"ID X 2"OD	137579	3"ID X 2-1/2"ID	128583	3"OD X 2-1/2"ID
128509	2-1/4"ID X 1-7/8"OD			128588	3"OD X 2-3/4"ID
128502	2-1/4"ID X 2"OD				
128521	2-1/4"ID X 2-1/8"OD				
128579	2-3/8"ID X 2"OD				
128505	2-1/2"ID X 2"OD				
128540	2-1/2"ID X 2-1/8"OD				
128518	2-1/2"ID X 2-1/4"OD				
128585	2-3/4"ID X 2-1/2"OD				
128584	3"ID X 2-3/4"OD				
137571	3"ID X 2-1/2"OD				

ID-OD Connector	
Part No.	Description
128531	1-1/2"ID X 1-1/2"OD
128539	1-5/8"ID X 1-5/8"OD
128515	1-3/4"ID X 1-3/4"OD
128538	1-7/8"ID X 1-7/8"OD
128501	2"ID X 2"OD
128525	2-1/8"ID X 2-1/8"OD
128512	2-1/4"ID X 2-1/4"OD
128517	2-1/2"ID X 2-1/2"OD
128587	2-3/4"ID X 2-3/4"OD
128581	3"ID X 3"OD

ID-ID Connector	
Part No.	Description
128519	1-1/2"ID X 1-1/2"ID
128574	1-5/8"ID X 1-5/8"ID
128529	1-3/4"ID X 1-3/4"ID
128524	1-7/8"ID X 1-7/8"ID
128504	2"ID X 2"ID
128510	2-1/8"ID X 2-1/8"ID
128511	2-1/4"ID X 2-1/4"ID
128513	2-1/2"ID X 2-1/2"ID
128586	2-3/4"ID X 2-3/4"ID
128582	3"ID X 3"ID

OD-OD Connector	
Part No.	Description
137565	2"OD X 2"OD
137570	2-1/2"OD X 2-1/2"OD
137578	3"OD X 3"OD



FLANGES

FLANGE



STAKED SPLIT FLANGE



Description
1-3/4" TO 2"
2" TO 2-1/4"
2-1/4" TO 2-1/2"

BOLTS



NUTS



SPRING



409 STAINLESS STEEL MUFFLER



4 X 9 OVAL 14" MUFFLER 20" OVERALL

WD1224	2"x 2" OFFSET/CENTER
WD1225	2-1/4" X 2-1/4" OFFSET/CENTER
WD1226	2-1/2" X 2-1/2" OFFSET/CENTER
WD1229	3" X 3" OFFSET/CENTER
WD1234	2" X 2" OFFSET/OFFSET
WD1235	2-1/4" X 2-1/4" OFFSET/OFFSET
WD1236	2-1/2" X 2-1/2" OFFSET/OFFSET

4 X 9 OVAL 18" MUFFLER 24" OVERALL

WD1255	2-1/4" X 2-1/4" OFFSET/CENTER
WD1256	2-1/2" X 2-1/2" OFFSET/CENTER
WD1259	3" X 3" OFFSET/CENTER
WD1265	2-1/4" X 2-1/4" OFFSET/OFFSET
WD1266	2-1/2" X 2-1/2" OFFSET/OFFSET

5 X 8 OVAL 18" MUFFLER 24" OVERALL

WD2255	2-1/4" X 2-1/4" OFFSET/CENTER
WD2256	2-1/2" X 2-1/2" OFFSET/CENTER
WD2259	3" X 3" OFFSET/CENTER

5 X 8 OVAL 24" MUFFLER 30" OVERALL

WD2289	3" X 3" OFFSET/CENTER
--------	-----------------------

5 X 8 OVAL 14" MUFFLER 20" OVERALL

WD2149	2-1/4" X 2-1/4" CENTER/DUAL
WD2158	2-1/2" X 2-1/2" CENTER/DUAL
WD2198	3" X 2-1/2" CENTER/DUAL

5 X 8 OVAL 18" MUFFLER 24" OVERALL(Camaro)

WD2265	2-1/2" X 2-1/2" OFFSET/DUAL
--------	-----------------------------

5 X 8 OVAL 18" MUFFLER 24" OVERALL

WD2251	2-1/2" X 2-1/4" CFNTER/DUAL
WD2268	2-1/2" X 2-1/2" CENTER/DUAL
WD2278	3" X 2-1/4" CENTER/DUAL
WD2288	3" X 2-1/2" CENTER/DUAL
WD2298	3" X 3" CENTER/DUAL

5 X 8 OVAL 18" MUFFLER 24" OVERALL

WD2468	2-1/2" X 2-1/2" DUAL/DUAL
WD2469	3" X 3" DUAL/DUAL

5 X 11 OVAL 22" MUFFLER 28" OVERALL

WD2589	3" X 3" OFFSET/CENTER
WD2588	3" X 2-1/2" CENTER/DUAL
WD2579	3" X 3" CENTER/CENTER
WD2590	3" X 3" CENTER/DUAL

5 X 11 OVAL 22" MUFFLER 28" OVERALL

WD2568	2-1/2" X 2-1/2" DUAL/DUAL
--------	---------------------------

4 X 14 ROUND 14" MUFFLER 20" OVERALL

WD445	2-1/4" X 2-1/4" CENTER
WD416	2-1/2" X 2-1/2" CENTER

4 X 18 ROUND 18" MUFFLER 24" OVERALL

WD425	2-1/4" X 2-1/4" CENTER
WD426	2-1/2" X 2-1/2" CENTER

7 X 24 ROUND 24" MUFFLER 30" OVERALL

WD772	4" X 4" CENTER
-------	----------------

X & Y PIPES



X-PIPE

FLOX PIPES

Part No.	Dual Diameter (ID)	Center Line	Overall Length	Material
X214A	2.25"	4"	15"	Aluminized
X212A	2.5"	4"	15"	Aluminized
X300A	3"	4"	15"	Aluminized
X214S	2.25"	4"	15"	Stainless Steel
X212S	2.5"	4"	15"	Stainless Steel
X300S	3"	4"	15"	Stainless Steel



Y-PIPE

FLOY PIPES

Part No.	Dual Diameter (ID)	Center Line	Overall Length	Material
Y200A	2" X 2"	4"	10"	Aluminized
Y214A	2.25" X 2.25"	4"	10"	Aluminized
Y212A	2.5" X 2.5"	4"	10"	Aluminized
Y25214A	2.5" X 2.25"	4"	10"	Aluminized
Y3214A	3" X 2.25"	4"	10"	Aluminized
Y3212A	3" X 2.5"	4"	10"	Aluminized
Y300A	3" X 3"	4"	10"	Aluminized
Y200S	2" X 2"	4"	10"	Stainless Steel
Y214S	2.25" X 2.25"	4"	10"	Stainless Steel
Y212S	2.5" X 2.5"	4"	10"	Stainless Steel
Y25214S	2.5" X 2.25"	4"	10"	Stainless Steel
Y3214S	3" X 2.25"	4"	10"	Stainless Steel
Y3212S	3" X 2.5"	4"	10"	Stainless Steel
Y300S	3" X 3"	4"	10"	Stainless Steel

ALUMINIZED MUFFLER



4" X 9" ALUMINIZED MUFFLER

3 TUBE / 2 BAFFLE
WELDED NIPPLES



STAINLESS STEEL TIPS

ANGLE CUT TIPS 45°

Part No.	Length	ID	OD
AC312	12"	2-1/4"	3"
AC316	16"	2-1/4"	3"
AC318	18"	2-1/4"	3"
AC322	22"	2-1/4"	3"
AC324	24"	2-1/4"	3"
AC31212	12"	2-1/4"	3-1/2"
AC31216	16"	2-1/4"	3-1/2"
AC31218	18"	2-1/4"	3-1/2"
AC31222	22"	2-1/4"	3-1/2"
AC31224	24"	2-1/4"	3-1/2"
AC412	12"	2-1/4"	4"
AC416	16"	2-1/4"	4"
AC418	18"	2-1/4"	4"
AC422	22"	2-1/4"	4"
AC424	24"	2-1/4"	4"



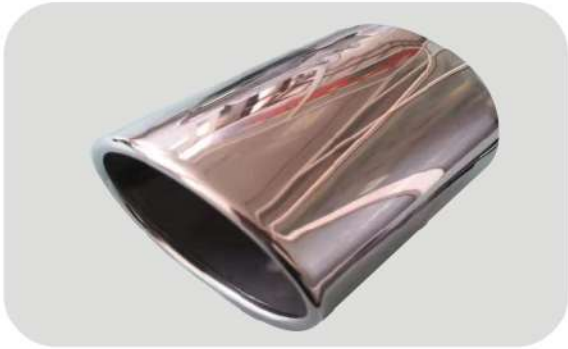
ROLLED PENCIL TIPS

Part No.	Length	ID	OD
RP312	12"	2-1/4"	3"
RP318	18"	2-1/4"	3"
RP322	22"	2-1/4"	3"
RP31212	12"	2-1/4"	3-1/2"
RP31218	18"	2-1/4"	3-1/2"
RP31222	22"	2-1/4"	3-1/2"
RP412	12"	2-1/4"	4"
RP418	18"	2-1/4"	4"
RP422	22"	2-1/4"	4"

ROLLED ANGLE TIPS 20°

Part No.	Length	ID	OD
RAC312	12"	2-1/4"	3"
RAC318	18"	2-1/4"	3"
RAC322	22"	2-1/4"	3"
RAC31212	12"	2-1/4"	3-1/2"
RAC31218	18"	2-1/4"	3-1/2"
RAC31222	22"	2-1/4"	3-1/2"
RAC412	12"	2-1/4"	4"
RAC418	18"	2-1/4"	4"
RAC422	22"	2-1/4"	4"

STAINLESS STEEL TIPS



Part No.	T001
Length	4-1/4"
Inlet	2-1/4"
Outlet	2-3/4" x 3-3/4"



Part No.	T002
Length	5-1/2"
Inlet	2-1/4"
Outlet	2-1/2" x 4-1/2"



Part No.	T003
Length	5-1/2"
Inlet	2-1/4"
Outlet	2-1/2"



Part No.	T004
Length	8-1/2"
Inlet	2-1/4"
Outlet	2-1/2" x 4"



Part No.	T005
Length	6"
Inlet	2"
Outlet	3" x 4"



Part No.	T006
Length	6"
Inlet	2-1/4"
Outlet	2-1/2"

STAINLESS STEEL TIPS



Part No.	T007
Length	8"
Inlet	2-1/2"
Outlet	3"



Part No.	T008
Length	15"
Inlet	5"
Outlet	6"



Part No.	T009
Length	6"
Inlet	2-1/2"
Outlet	3-1/2"



Part No.	T010
Length	5"
Inlet	6"
Outlet	4"



Part No.	T011
Length	10"
Inlet	2-1/2"
Outlet	Double 3-1/2"



Part No.	T012
Length	8"
Inlet	2-1/2"
Outlet	Double 4"

CHROME TIPS

T156



FITS PIPES UP TO 1-3/4"

Length	7"
Inlet	1-7/8"

T226



FITS PIPES UP TO 2-1/4"

Length	9"
Inlet	2-1/2"

T266



FITS PIPES UP TO 2"

Length	9"
Inlet	2-1/8"

T268



FITS PIPES UP TO 2-1/4"

Length	9"
Inlet	2-3/8"

T276



FITS PIPES UP TO 2"

Length	9"
Inlet	2-1/8"

T286



FITS PIPES UP TO 2-1/4"

Length	9"
Inlet	2-3/8"

T356



FITS PIPES UP TO 2-1/2"

Length	8"
Inlet	2-5/8"

T246



FITS PIPES UP TO 2-1/4"

Length	10"
Inlet	2-3/8"

T521



FITS PIPES UP TO 2-1/4"

Length	9"
Inlet	2-3/8"

CHROME TIPS

T531



FITS PIPES UP TO 2"

Length	9"
Inlet	2-1/8"

T531B



FITS PIPES UP TO 2"

Length	9"
Inlet	2-1/8"

T691



FITS PIPES UP TO 2-1/8"

Length	7"
Inlet	2-1/4"

T011



FITS PIPES UP TO 2"

Length	4-1/2"
Inlet	2-1/8"

T021



FITS PIPES UP TO 2-1/4"

Length	4-1/2"
Inlet	2-1/2"

T091



FITS PIPES UP TO 2-3/4"

Length	7"
Inlet	2-7/8"

T331



FITS PIPES UP TO 2-1/4"

Length	12"
Inlet	2-3/8"

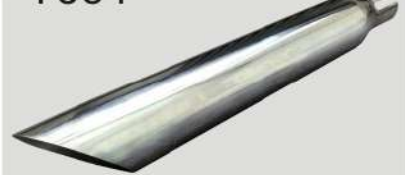
T341



FITS PIPES UP TO 2-1/4"

Length	18"
Inlet	2-3/8"

T351



FITS PIPES UP TO 2-1/4"

Length	24"
Inlet	2-3/8"